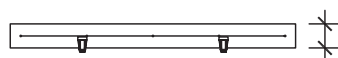
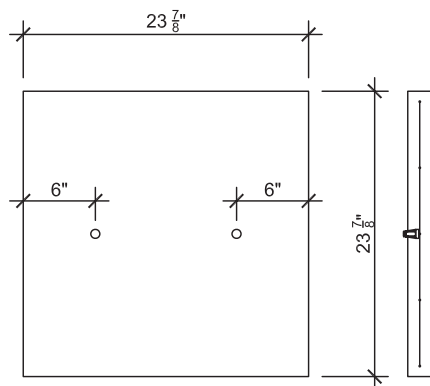


Dekstone®

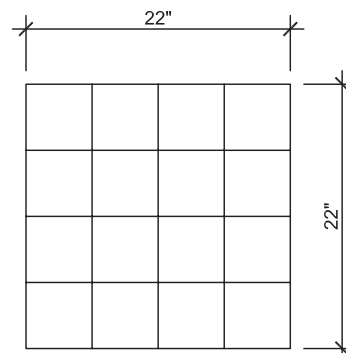
Dekstone® Architectural Series



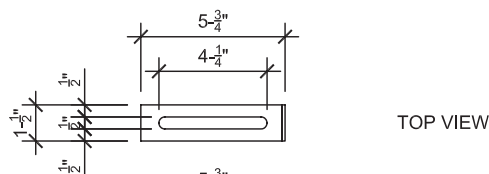
TYPICAL DEKSTONE®
PLAN AND PROFILE



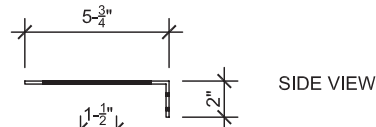
NON-CORROSIVE THREADED INSERTS
WITH 3/8" BOLT WITH FLAT WASHER & LOCK WASHER



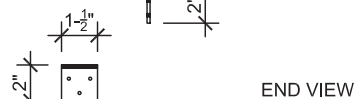
WELDED WIRE MESH REINFORING



TOP VIEW



SIDE VIEW



END VIEW

NON-CORROSIVE BOLT ON ANGLE STRAP

NOTES:

1. MATERIAL:

- PRECAST CONCRETE DEKSTONE® SHALL HAVE A MINIMUM COMPRESSIVE STRENGTH OF 5000 P.S.I.
- REINFORCEMENT SHALL BE ZINC PLATED WELDED WIRE MESH.
- NOMINAL SIZE 23 7/8" x 23 7/8" x 2" THICK.

2. EDGE SUPPORT:

- 2x BLOCKING EDGE SUPPORT REQUIRED AT END OF FLOOR JOIST.

3. DEKSTONE® PAVERS SHALL BE INSTALLED WITH A WATERPROOF MEMBRANE OVER FRAMING MEMBERS; DO NOT INSTALL DIRECTLY ON WOOD MEMBERS, MIN.1/8" GAP.

4. DEKSTONE® PAVERS SHALL HAVE A MINIMUM 11/2" BEARING SURFACE ON TWO PARALLEL SIDES.

5. FRAMING MEMBERS NOT BY "STEPSTONE" (TYPICAL).

6. ALL DEKSTONES® HAVE THE ABILITY TO BE FASTENED TO THE JOIST WITH TWO THREADED INSERTS.

7. USUALLY ONLY THE PERIMETER PAVERS NEED TO BE CONTAINED TO CONTAIN THE FIELD OF THE DEKSTONES.®

8. IN SOME CASES IT MAY BE DESIRABLE TO FASTEN ALL DEKSTONES® TO THE JOISTS.

9. THESE DETAILS ARE INTENDED TO BE THE STANDARD PLAN FOR DEKSTONE® PRECAST CONCRETE DECKING MATERIAL ONLY. THE DESIGN OF THE STRUCTURE AND COMPLIANCE TO LOCAL BUILDING CODES IS THE RESPONSIBILITY OF THE USER.

GENERAL DETAILS

N.T.S.
FILE: DEK-1-04

REV: 05. 01. 08

Page 1

Visit us at our website www.dekstone.com



Stepstone, Inc.
800.572.9029

17025 SOUTH MAIN ST., GARDENA CA 90248 TEL 310.327.7474 FAX 310.217.1424